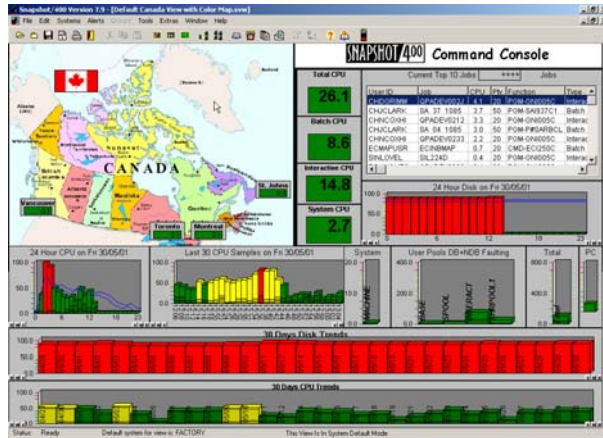


"Systems management in the past was a deep, dark secret. Today it is one of the most important requirements for running an enterprise computing environment."

*Lou Gerstner (Immediate Past President and CEO - IBM)*

Snapshot/400 is the ultimate Systems Management tool designed specifically for the IBM iSeries, and comes complete with a wide spectrum of functionality, including **FIVE** separate tools:



1. Graphical Performance Management System
2. Alert and Paging Module
3. CPU Usage Reporting Module
4. LAN/WAN Remote Response Monitoring
5. Capacity Simulator

SnapShot/400 takes a "snapshot" of the "internals" of the iSeries machine at user definable specific intervals, interprets it, and reads this data to the PC that uses it to provide a graphical representation of the iSeries performance.

At a glance, operations staff can monitor & manage a machine or a cluster of iSeries' systems running SnapShot/400

to ensure they are performing at optimal levels, thereby optimizing the investment in your iSeries systems.

First developed back in 1994, SnapShot/400 is now used on hundreds of systems around the world including the following 'famous names':



"Best Product 2001"  
The IBM iSeries Magazine